

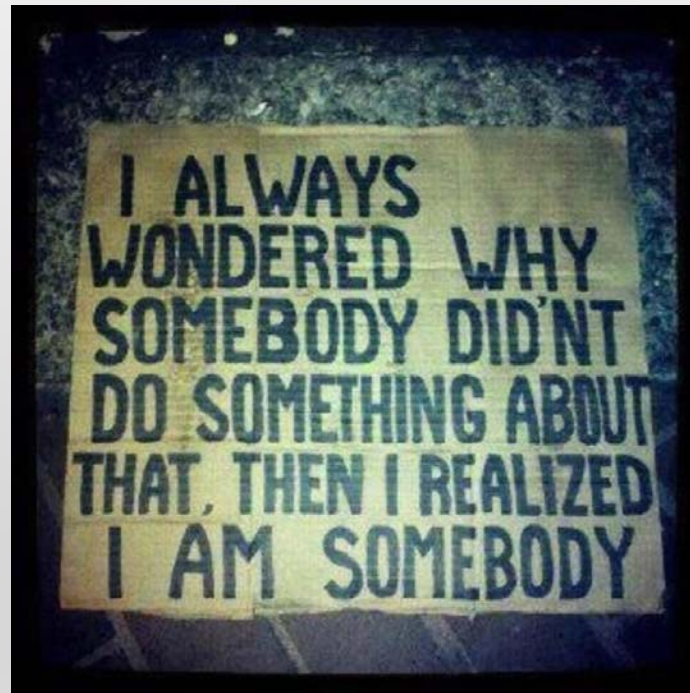
Wildfire in Idaho and Preparing for IT

Do I have WUI?

What is the risk of wildfire in my community?

Where do I fit in to the wildfire equation?

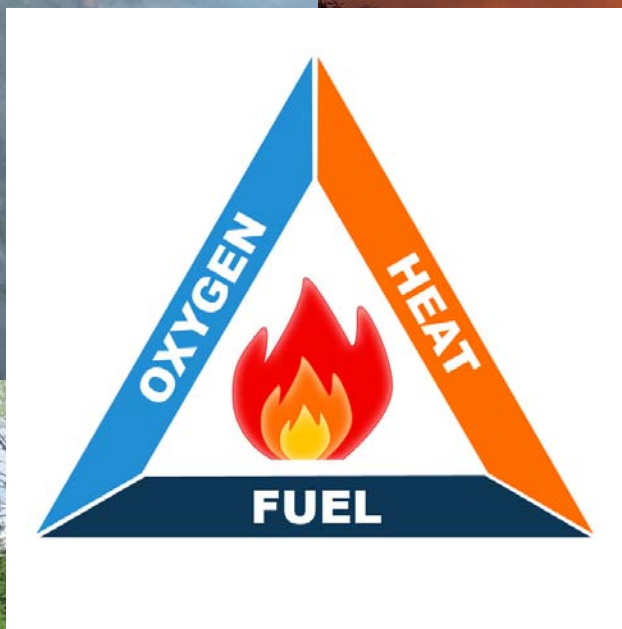
WHO OWNS WILDFIRE?





A diamond-shaped collage featuring historical documents, a quill pen, and a metal fastener. The documents are aged and yellowed, with some text visible, including "THE POINT GUYS" and "McBride". The quill pen is positioned diagonally across the center. The metal fastener is a small, circular object with a textured surface.

Some Background & A Little History



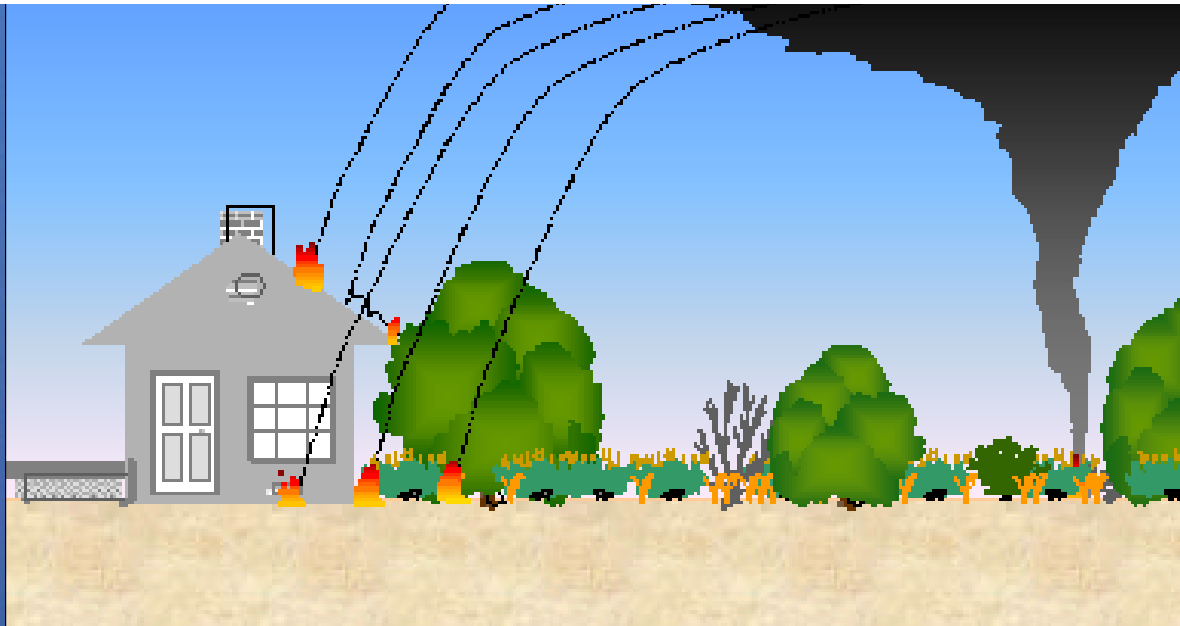
Heat Transfer



Convection

Radiant

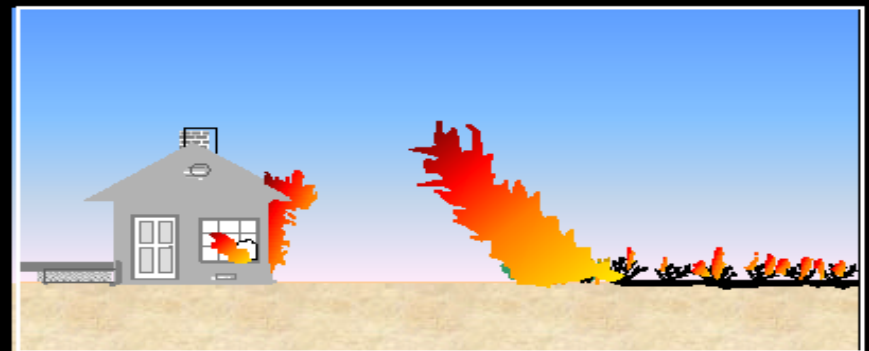
Conduction



Contact by flames...



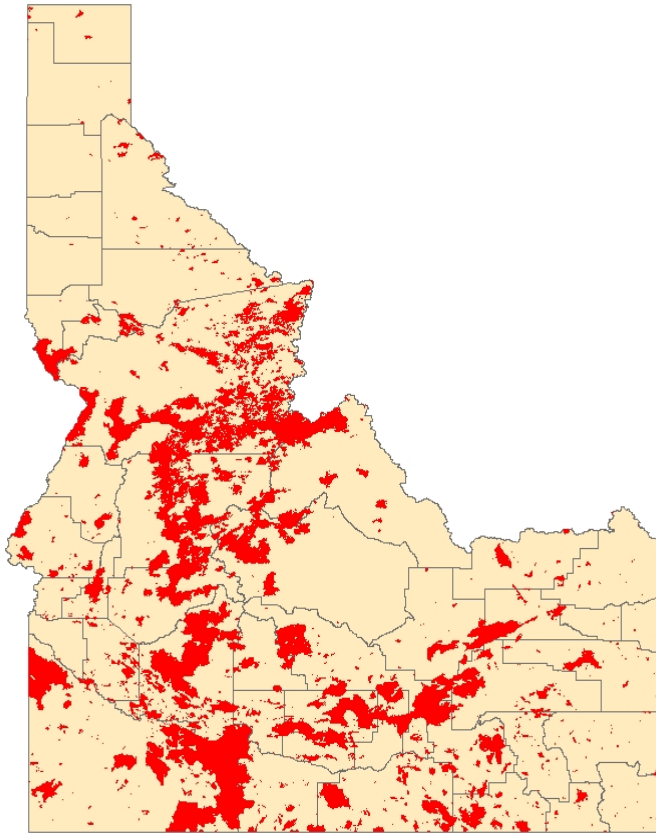
Radiated heat...



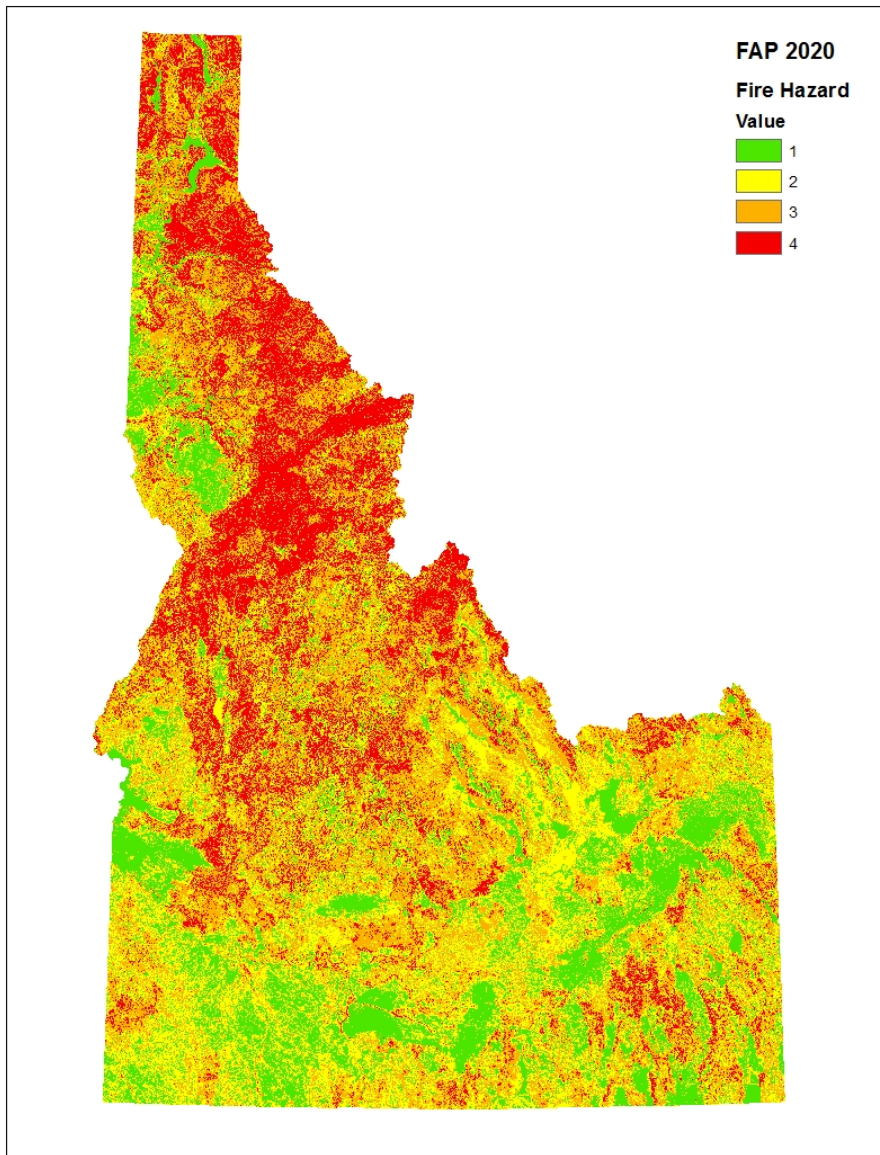
What is the risk of wildfire in Idaho? (And why do we care?)

- Measuring the price of wildfire
 - In 1995, wildfire made up 16% of USFS budget; in 2015, >50%
 - A recent study suggests protecting a home can add \$225,000
 - Long-term consequences not as easily quantified
- 8 of the 10 most expensive fires in the past 100 years were WUI fires
- It has been said that only 14% of the WUI is developed

Idaho Fire History 2007-2017



**It Will Happen in your
County, Community
and Neighborhood!**



This simple linear hazard model accounts for only **5** inputs.

1. Fire History
2. Vegetation
3. Slope
4. Aspect
5. WUI



What is the wildland-urban interface?

- Sociological
 - Common
 - USFS
 - Density
- Legal
 - Healthy Forest Restoration Act of 2003
 - 16 U.S.C. § 6511 (2016)
 - Executive Order

Wildland Urban Interface as Defined by Idaho Dept. of Lands

Definition: Is an area where developed lands interact with undeveloped lands and includes the infrastructure and natural resources communities rely on for existence.

Location: It is found in remote scattered development areas to highly developed urban areas and everywhere in between.

Where isn't it in Idaho?

Questions



What Role DO I PLAY?

- Understand fire in your area and how to prepare
- Take on the responsibility to educate each other
- Actively engage with contractors and the public



Understanding Planning



CWPP (minimum) Requirements

- Collaborative
- County Info
- WUI Defined
- Risk Modeled
- Projects Listed
- Resources
- Accomplishment



CWPP

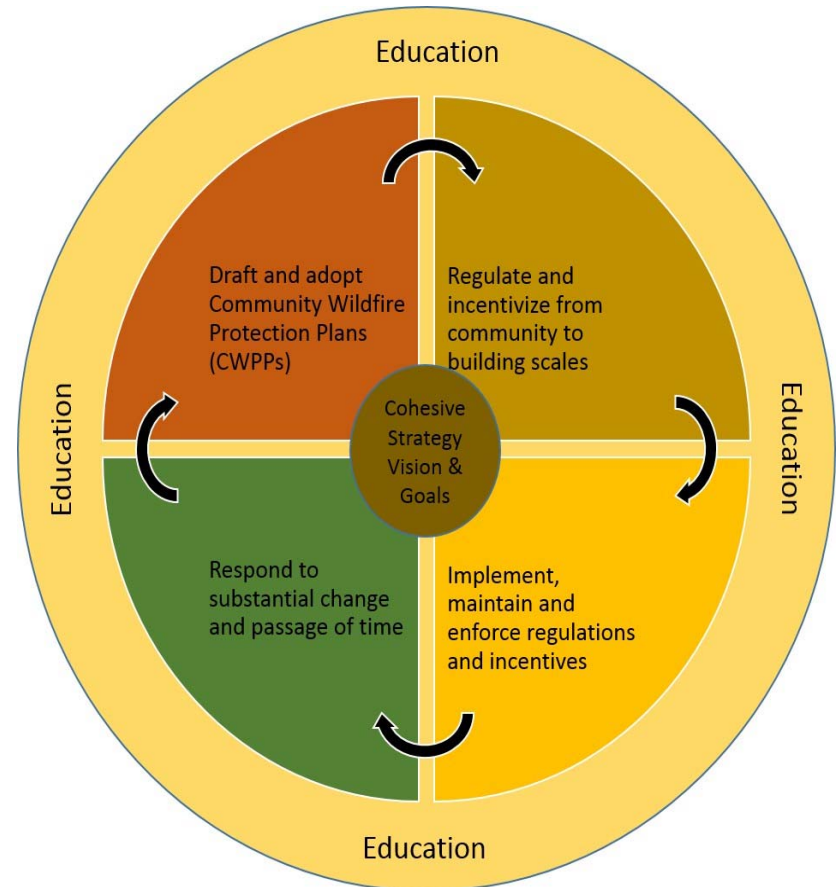
- National History
 - Healthy Forest Restoration Act
- Idaho History
 - County Based CWPPs
- Current Effort
 - Community developed CWPPs

Planning for Wildfire in the Wildland-Urban Interface

https://papers.ssrn.com/sol3/papers.cfm?abstract_id=2845046

The WUI Wildfire Planning Process

- Plan Development
- Understand Drivers
- Engage
- Change/Disturbance



Post Fire Recovery and Response

(who can help)

- People
 - Insurance
 - Economics
- Infrastructure
 - Power
 - Roads
 - Water
 - Waste Treatment
- Landscapes
 - Stabilization
 - Recovery

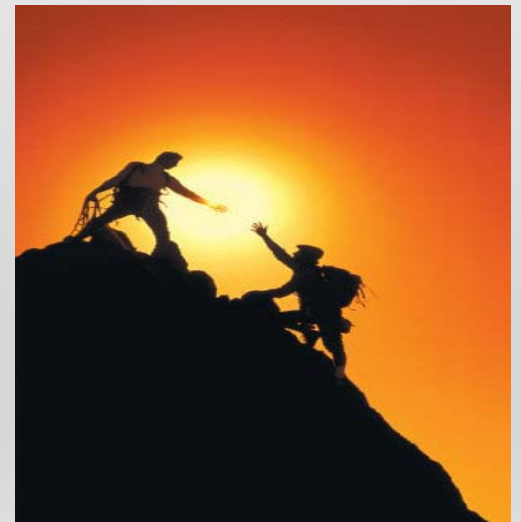


Questions



Understanding Benefits

- **Costs less to prepare than respond**
- **Builds relationships**
- **Establishes common goals**
- **Get to share the burden**



NEXT STEPS

- Evaluate what is needed
- Know where your community is at in the planning cycle
- Is your agency involved
- who else needs to be involved that is not
- Decide how to engage
- Get to work





Thanks

Tyre Holfeltz

Fire Prevention & Risk Mitigation Program Manager
Idaho Department of Lands

208-666-8653

tholfeltz@idl.Idaho.gov